

FINAL 4



OFFICIAL PROGRAMME

**VOLLEYBALL
ENGLAND**

27TH AND 28TH APRIL 2024
NATIONAL VOLLEYBALL CENTRE, KETTERING

WELCOME TO FINAL 4



Charlie Ford (Right) along side Hall of fame Referee Glynn Archibald

Hello, and welcome to the climax of the 2023-24 Super League season!

This weekend will see the top four teams from both the men's and women's leagues battle it out in a semi-final on Saturday and then the gold and bronze medal matches on Sunday.

Across this season we have highlighted every team in the Super League with short-form video content, weekend previews and reviews as well as highlight videos of weekly action.

This combined with weekly stats, Team of the Month awards and Player of the Month awards has allowed Volleyball England to elevate the level of the sport.

I would like to congratulate all of the teams who have made it to the Final 4 and wish them all the best of luck in what promises to be a hugely exciting weekend.

I also want to thank the friends, family and fans who have travelled to the National Volleyball Centre this weekend to watch and support their teams.

Last, and by no means least, I would like to thank the centre staff for allowing us to host this event and their ongoing support as well as the Hub team who have organised and prepared this weekend's action.

Enjoy the Final 4 weekend and thank you for joining us.

Charlie Ford

Charlie Ford
Chief Executive Officer,
Volleyball England

SOCIALS

SHARE YOUR PICTURES AND
VIDEOS WITH US VIA

#FINAL4



@volleyballengland



Volleyball England



@VballEngland



@VballEngland



Volleyball England

SATURDAY SCHEDULE



11:30

Semi final 1

TEAM SIDEOUT POLONIA VS ESSEX REBELS

First place

Fourth place



13:30

Semi final 2

IBB POLONIA LONDON VS ESSEX REBELS

First place

Fourth place



15:30

Semi final 3

DURHAM PALATINATES VS MALORY EAGLES

Second place

Third place



17:30

Semi final 4

DURHAM PALATINATES VS MALORY EAGLES

Second place

Third place

SUNDAY SCHEDULE



10:30

Women's Bronze medal match

LOSER SEMI-FINAL 1 VS LOSER SEMI-FINAL 3



12:30

Men's Bronze medal match

LOSER SEMI-FINAL 2 VS LOSER SEMI-FINAL 4



15:30

Women's Final

WINNER SEMI-FINAL 1 VS WINNER SEMI-FINAL 3



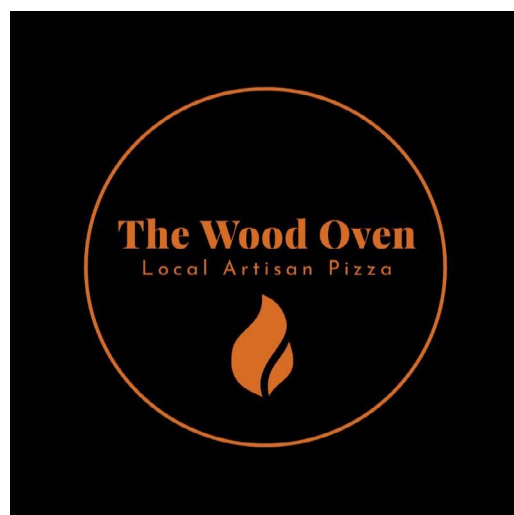
16:30

Men's Final

WINNER SEMI-FINAL 2 VS WINNER SEMI-FINAL 4

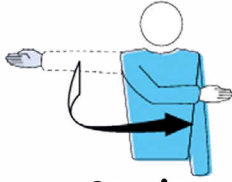
HUNGRY?

**The Wood Oven will be serving
pizza all weekend.
Click their logo to view their
menu.**



REFEREE 101

Get to grips with the Officials' signals



Service
Hand moves from serving team side to signal the start of a point



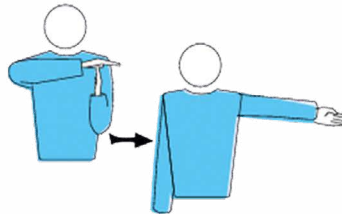
Ball Touched
The ball was touched before going dead



Ball Touched
The ball was touched before going dead



Ball Out
Flag raised vertically to signal ball landing out of court



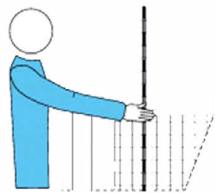
Timeout
A team has called for a time out (30seconds)



Ball In
The ball landed in the area of play



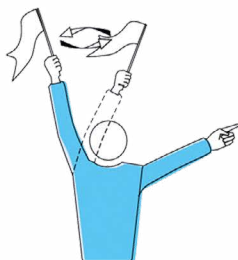
Four Touches
Ball has been touched four times giving the other team a point



Net Touch
A player has touched the net during a point



Ball Out
The ball landed out in the area of play



Crossing Space Fault
The ball has touched an antenna, wall or other surface not in play



Double Touch
The player has touched the ball twice in a row



Rotation fault
Players are not in correct location at the time of service

VOLLEYBALL 101

A whistle-stop guide to the face-paced and thrilling game!

- A volleyball game consists of two teams of six players each, separated by a net. Volleyball positions are Setter, Middle, Outside, Opposite and Libero.
- Two teams will rally - or hit the ball back and forth over the net - until a fault occurs.
- There is a maximum of three touches per side (a block does not count as a touch).
- The objective is to score points by sending the ball over the net, and grounding it in the opponent's side of the court.
- Volleyball matches are made up of sets, typically three or five sets. All matches at Final 4 will be played as best of five.
- Each set is played to 25 points. Sets must be won by at least two clear points. Tie break sets (fifth set) are played to 15 points.

Quick guide rules

- Only six players on the floor at any given time: three in the front row and three in the back row.
- Players may not touch the ball twice in succession (a block is not considered a hit).
- A ball may be played off the net during a volley and on a serve.
- A ball hitting a boundary line is in.
- A ball is out if it hits an antenna, the floor completely outside the court, any of the net or cables outside the antennae, the referee stand or pole, or the ceiling above a non-playable area.
- It is legal to contact the ball with any part of a player's body.
- It is illegal to catch, hold or throw the ball.
- A player cannot block or attack a serve from on or inside the three-metre line.

OFFICIALS

SATURDAY MATCHES

FINAL 4

SEMI-FINAL 1

First Referee - IGNACIO DIEZ

Second Referee - SEBASTIAN WIDLARZ

SEMI-FINAL 2

First Referee - ANNA JUSTKOWSKA

Second Referee - KATARINA CEPINOVA

SEMI-FINAL 3

First Referee - DOMENICO DE MATTIA

Second Referee - DOMINIK BIEGAJLO

SEMI-FINAL 4

First Referee - NICK HECKFORD

Second Referee - JOSEPH GORE

TEAM SIDEOUT POLONIA

Head Coach - **MARK KONTOPOULOS**

Bench Personnel - **HAI-BINH LY**

Assistant Coach - **VLADISLAV POTEHIN**

Team Manager - **GABI KONTOPOULOS MEDRICKA**



CAORIE MILLERD
Outside



MERVE AKIN
Setter



MARIA SVIRIDOVA
Middle



JADEN SCOTT
Middle



KATARZYNA PLUCINSKA
Outside



JANA PARMOVA
Outside



ALICE JAGIELSKA
Opposite



EMMA BUBOLA
Opposite



KONSTANTINA SKANDALI
Setter



KANAKO HAYASHI
Outside



JULIA TOKARENKO
Outside



SYDNEY BUSA
Outside



ANNA TSOUMI
Libero



ALARA YILMAZ
Libero



Team SideOut have been a consistent presence at the top end of the table - even when they had played fewer games than their opponents, as was the case in the early part of the season.

They have played the majority of their matches since the turn of the year but have built up a strong momentum in the second half of the season to peak at the right moment and propel themselves to the top of the MAAREE Women's Super League.

Their first defeat came in early December when they were beaten by long-standing rivals Durham on home turf by a 3-2 scoreline and they suffered only one more setback, at the University of Nottingham, where they were surprisingly beaten 3-2.

Those games aside, though, the team have been a bastion of consistency. Opening the season with a five-game winning streak instantly showcased what the team were about, and that they had every chance of challenging for honours, having finished second in the league and losing in the Cup Final in 2022-23.

This has certainly proved to be the case with Polonia's run through to the Cup Final and subsequent victory over the Palatinates last weekend, which should put them in a strong frame of mind for what is to come.

Sydney Busa, MVP in that match, has been a key performer for Polonia all season, with the American hitting top form in recent weeks to be named as Errea Player of the Month for March.

SideOut's standout performance was away to Durham where they avenged their defeat earlier in the season with a confident 3-0 victory after making the long trip up north, adding to their sense that this season would turn out differently to the last.

With the chance of a double now in their sights, Team SideOut will go in as favourites and will, no doubt, be determined to live up to that tag.

One to watch

Maria Sviridova has arguably been the MAAREE Women's Super League's standout player, with the Russian middle topping the attackers and blockers leaderboard and being named Errea Player of the Month twice.

Most improved

Head Coach Mark Kontopoulos feels one of the players who has developed the most this season is setter **Merve Akin**. Her success is shown in the stat leaderboards where she tops the charts with 309 assists from 738 attempts, giving her a 41.9% success rate.

ESSEX REBELS

Head Coach - **ALEX CHINERY**

Bench Personnel - **CHARLOTTE BONTEMS**

Assistant Coach - **ALEX PORTER**

Bench Personnel - **VERONIKA RUBINOVA**



CATHERINE TOLLEY
Middle



KATE FUNDAFUNDA
Outside



EMILY PRIESTLEY
Outside



KATHRYN ATTAR
Outside



CHELSEA SIMMONS
Setter



LEA BOROVEC
Outside



SASKIA FREITAS-SCHOEFFEL
Middle



TARA KING
Opposite



ELLEN FLOYD
Setter



Leah Blight
Universal



BRIANNE CARMODY
Opposite



GRACE IGBOKWE
Middle



MADOKA WELDON
Libero



GRACE IGBOKWE
Libero





Gaining nine points from a possible nine in their opening three matches, Essex Rebels had a flying start to their season and were the early front runners.

It was Durham who broke their winning streak with a 3-1 home victory, but Essex responded positively, with two more victories over Darkstar Derbyshire and Cambridge ARU.

Following that, the Rebels have had their successes and days of frustration to finish with an 11-7 record, but were particularly ruthless in dispatching the teams at the bottom end of the Super League.

Some stand-out performances for the Colchester-based team have been put in by professional signing Ellen Floyd, who sits third in the setter leaderboard, with her experience proving to be a real plus for the Essex side.

Reaching the semi-finals of the National Cup, and final of the BUCS National Cup the Rebels will be looking to go one further with a Super League title.

The team have been learning new systems, put in place by head coach Alex Chinery and are certainly a team to be wary of in this end-of-season showdown. With a point to prove, the Rebels are not to be taken lightly.

Essex have lost on both occasions against semi-final opponents Team SideOut Polonia, but can take heart from the fact that they were able to run the London side much closer in their last meeting, taking a set off them in the process.

One to watch

Kathryn Attar was one of the first professional players to be drafted into the Super League by Essex. She has been troubled by injury during the season, but will hope the month's rest between their last regular season game and the Final 4 will see her come out of the blocks fast.

Most improved

Catherine Tolley has featured highly on the stat leaderboards for large chunks of the season, ranking third in blocks and fifth in attacks at the end of the regular season (the highest of any English player in the league). The middle prospect will be looking to impress further this weekend.

VOLLEYBALL ENGLAND FOUNDATION

The Foundation aims to provide financial support to help develop, educate and promote the health of individuals and groups through volleyball.



It is the aim of the Foundation to ensure the opportunity to play volleyball is available to all, and is not limited by income.

Our projects and services are designed to aid those who are most in need, under-served or under-represented in our communities. In this way, we can help improve the lives of others, through our beloved sport of volleyball.



Some of our projects over the last two years have been supporting children in Birmingham to have their first experience of volleyball, supporting the young volunteers at the Commonwealth Games and supporting the sitting volleyball community.

How can you help the foundation?

- Go to our website and become a regular donor.
- Support our fundraising events such as the Christmas Auction.
- Become an ambassador or volunteer for the Foundation



www.volleyballenglandfoundation.org

HER CALL

Supporting every female referee in England to develop, grow and further enhance their knowledge and experience of refereeing.

HER CALL



IBB POLONIA LONDON

Head Coach - **GRZEGORZ NISKI**

Bench Personnel - **RIFAT HUSSEIN**

Assistant Coach - **MIHAIL STOEV**



1
HENRY MAZZEO DE LIMA
Outside



2
VAIDAS AUDICKAS
Middle



4
DIEGO TAMBORINI
Setter



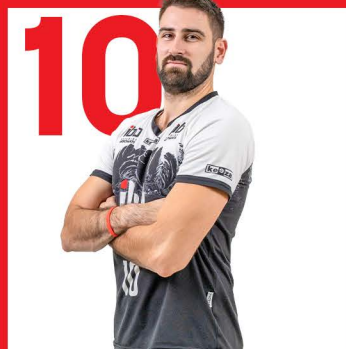
7
DAHMANE BENTITI
Opposite



8
EPHRAIM MILLS
Middle



9
ANDREA MAGGIO
Outside/Opposite



10
MIHAIL STOEV
Outside



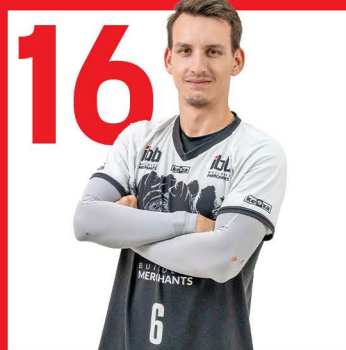
11
TAI YAT CHAU
Outside



12
PIERO MULLER
Outside



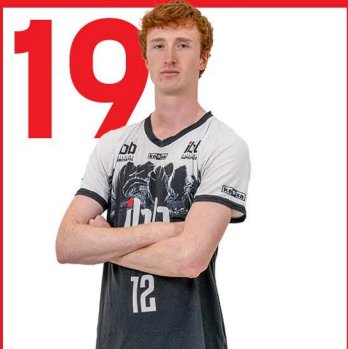
14
OLAFS MATJUSENOKS
Middle



16
FILIP DENCHEV
Outside/Opposite



17
PEARSON STILLER
Setter



19
SAMUEL BARLETT-TISDALL
Middle/Opposite



15
FILIP RODRIGUES
Libero



18
GEORGE IVANOV
Libero



20
OLIVER WROBEL
Setter



Suffering one defeat all season (against Durham) IBB Polonia have been the standout team so far this 2023-24 season, topping the regular season table with a 17-1 record.

It began at Opening Weekend with a hard-fought 3-1 victory over Leeds Gorse, and the London side repeated this scoreline in their next two matches against defending Super League Champions Durham Palatinates and University of Nottingham, underlining their lofty ambitions.

Their first five-set game of the season came against capital rivals Richmond Docklands, who took the first two sets, but Polonia found a way to come back and prevail by a 3-2 margin.

A six-game winning streak without dropping a set followed, with consecutive victories over Essex Rebels, Malory Eagles, Leeds Gorse, Newcastle Staffs, Team Sunderland and University of Nottingham.

The power of Polonia's outside Mihail Stoev, who has been in the top five attackers for a large portion of the season, has certainly played its part, as has the metronomic consistency of setter Diego Tamburini.

A stand-out game of the season for Polonia came in their very last fixture when Stockport travelled to the capital to try and cause an upset.

Stockport started well to take the first set (a task very few teams have been able to do), but Polonia hit back in the second to record a convincing 25-14 scoreline.

As the Northolt High School-based team took the third set 25-23, there seemed to be a swing in momentum but the Greater Manchester side had other ideas, winning a huge fourth set 35-33.

As they have done all season, Polonia, led by Head Coach Grzegorz Nisk, demonstrated their ability to perform under pressure and edged a tense tie-break set 15-13 to secure victory.

One to watch

England Senior international Ephraim Mills has had an excellent season for both club and country, with the middle proving to be an effective weapon for Polonia at the net, both in terms of blocks and kills.

Most improved

Tai Yat Chau, affectionately known to his teammates as 'Ian', has grown into the season as it has gone on, gaining more court time as a result and rewarding the faith shown in him with some eye-catching performances.

ESSEX REBELS

Head Coach - **ALEX PORTER**
Bench Personnel - **HASSAN FARHAT**

Assistant Coach - **ALEX CHINERY**
Bench Personnel - **CONNOR REEVE**
Bench Personnel - **ASHER MILLER**



BEN OSBORNE
Outside



DEVON GLEAVE
Outside



MAX NORTON-STEELE
Opposite



ANDREW WOOD
Middle



NICO GAJKIEWICZ
Opposite



SAM SHERWIN
Middle



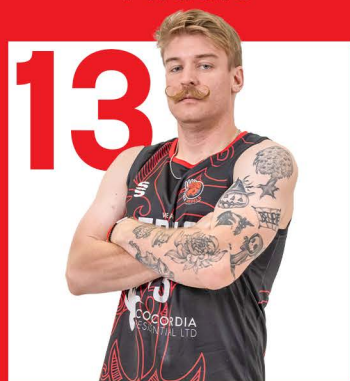
ASHER MILLER
Universal



HASSAN FARHAT
Outside



EUAN FRASER
Setter



WILLIAM RAGLAND
Outside



ALDRIN RENA
Setter



THOMAS SHATIMEHIN
Outside



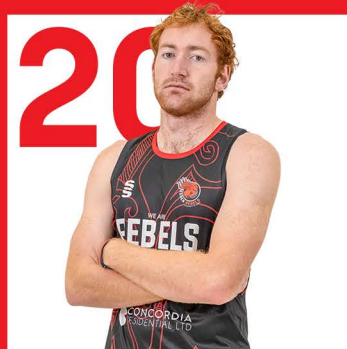
THOMAS JEFFERSON
Middle



LEFTIERIS IOANNOU
Libero



BEN BUTLER
Libero



KYLE VOM STEEG
Opposite



Essex Rebels will face regular season league winners IBB Polonia in the Final 4 semi-final after finishing fourth in the Men's Super League table with a record of 11-7.

The university side started off the season strongly, with three victories on the bounce, including an impressive 3-0 victory over University of Nottingham at Opening Weekend.

They then beat Newcastle Staffs without dropping a set in their second match of the season before also beating Richmond, who were able to take a set off the Colchester-based team but no more.

Durham - who will face Malory Eagles in the semi-finals - were the first team to defeat Essex in their fourth game when securing a 3-0 triumph in the North East.

Since then, the Rebels' form throughout the season has been up and down, but there have been some outstanding victories, none more so than in the National Cup quarter-final against IBB Polonia where they ran out 19-17 winners in a five-set thriller. The London team did, however, gain revenge a week later with a league success.

One of the performances of the season for Alex Porter's side was the return fixture against Malory Eagles, having suffered a 3-1 defeat on the road.

Back on their home court, brothers Thomas (Essex) and Tobi (Malory) Shatimehin battled it out for a second time, with the younger sibling coming out on top after a convincing 3-1 Rebels victory (17-25, 25-21, 25-15, 25-12).

With both teams having qualified for Final 4, it means the brothers could meet again in the final if both teams are successful in their first matches. Watch this space...

Polonia have got the better of Essex in both league meetings this season, but with that Cup success in the back of their minds, the fourth-ranked team will have high hopes of toppling the number one seed.

One to watch

UCLA graduate Kyle Vom Steeg is a player who could really catch fire this weekend. After having a tough season with injury and adapting to a new programme, the 6ft 7in opposite will be determined to bolster Essex's offence.

Most improved

Thomas Shatimehin has been cited by Head Coach Alex Porter as a player who has made real progress this season and the England international's stats reflect this, with the explosive hitter winning the Errea Player of the Month Award in February.

DURHAM PALATINATES

Head Coach - **PAUL WELSH**
Bench Personnel - **MAX GIBBINS**

Assistant Coach - **ROSS ENFIELD**



HANNA LAUBE
Setter



TAYLOR LITTEKEN
Middle



SYDNEY STEVENS
Outside



KENNADIE JAKE-TURNER
Middle



ALICE BRAND
Outside



SYDNEY ABER
Opposite



DEFNE CINAR
Outside



MALEA STANTON
Setter



KASEY BELL
Opposite



SUSANNA SUTIKI
Setter



CAMRYN CARFINO
Outside



NATALIE COLFESCU
Libero



EMILY HABER
Libero



In a close run race for the regular season top spot, Durham Palatinates finished level on points with close rivals Team SideOut Polonia, but missed out on the top spot by just one set.

In their Final 4 semi-final, they will face a Malory Eagles side who they got the better of them both times this season in the MAAREE Women's Super League - 3-1 at Graham Sports Centre and 3-2 at Ernest Bevin College.

With a record of 17-1, the North East team replicated their record of last year exactly, but found that in 2023-24 it was not enough to secure top spot.

Captain Alice Brand, one of the returners from last year's team and the only English player in the squad, has continued to provide a level of consistency and continuity that has helped the transition to a new-look team for this season, appear relatively seamless.

Head Coach Paul Welsh can also call upon the formidable talents of US duo, middle, Taylor Littken and setter Malea Stanton, who have both claimed the Player of the Month accolade during the course of the season.

Sydney Stevens, Kennadie Jake-Turner and Emily Haber have also dominated the stats leaderboards, meaning that contributions have come from all around the team, rather than relying on one or two key players.

After starting as they meant to go on with a 3-1 victory over Cambridge ARU at Opening Weekend, Durham's only loss came to Polonia in March, but the North East team had secured their spot in the Final 4, so the loss did no more than damage their unbeaten run.

They also lost to the Londoners in last week's Cup Final, having won the trophy the year before, but did conquer their closest rivals earlier in the season in the capital, winning 15-12 in the decider.

One to watch

Former Black Country, Birmingham and Darkstar Derbyshire player **Alice Brand** has flourished since moving north to study for a degree in Sport and Exercise Science thanks to her strong all-court game.

Most improved

Emily Haber has featured more frequently for the Palatinates in the second half of the season and has proven to be an excellent line of defence for her side, with her agility and ability to keep the ball alive.

MALORY EAGLES

Head Coach - **JEFFERSON WILLIAMS**
Assistant Coach - **IAN LEGRAND**

Assistant Coach - **CAROL GORDON**
Team Manager - **ANDREW OMOSEBI**
Statistician - **ANTONIO CODRINGTON**



STEPHANIE BOYCE
Middle



SELENA BATISTE
Setter



CHLOE ALLEN
Outside



GRACE LAZARD
Universal



MADELEINE BUIST
Middle



HARRIETT PHILIP-EDWARDS
Setter



KELYSIAN WARMINGTON
Middle



SOPHIE SZYSZKO
Universal



EILEEN SHI
Outside



JOHANNA KRUIZE
Outside



MECHELL DANIEL
Middle



HANNAH DAVIS
Middle



ARI SIERRA
Libero



PATRICIA CO
Libero



Malory Eagles started their season off in fine style at Opening Weekend with a confident 3-0 victory over Coventry and Warwick Riga, but, otherwise, did not have it easy in the early stages.

Following on from their opening day triumph, the team had to quickly pick themselves up after consecutive losses to Durham, who won 3-1, and Leeds Gorse, who fought back to edge out the Eagles 3-2.

But bounce back Malory did, putting together a run of four consecutive victories in straight sets against Darkstar Derbyshire, University of Nottingham, Coventry and Warwick Riga and London Lionhearts, as part of a streak of six wins in seven.

Malory know they face a serious challenge to reach the final in this competition, having lost twice to opponents Durham during the regular season, but they can take solace from the fact that both matches were highly competitive.

Outside Eileen Shi, was an early winner of the Errea Player of the Month award, securing the vote for October, despite a mixed start for the team.

Middle Steph Boyce has also been one of the most consistent performers in her position in the league and will be looking to add to her Cup Finals Weekend triumph last weekend, where she coached The Boswells School U16 to success against Richmond.

Interestingly, the top three teams in the Women's Super League, including Malory, have all been involved in the same amount of three-set matches (12).

However, in contrast, when Durham, Malory, SideOut and Essex have faced each other, there have almost always been at least four sets of action - pointing to the likelihood of some thrilling encounters this weekend.

One to watch

US outside **Chloe Allen** has been the dominant force for the Eagles and promises to bring a high level of energy for the team this weekend, along with a powerful swing, which has helped keep Malory firing on all cylinders throughout the season.

Most improved

Ariadne Sierra has supplied the defensive prowess as Libero, rarely letting the team down.

FIND A CLUB

Discover your local club
with our club finder



Get involved here



www.volleyballengland.org/clubs/club-finder

GET INTO COACHING

Develop the next generation
of volleyball players



Get involved here



www.volleyballengland.org/get-involved/coach

DURHAM PALATINATES

Bench Personnel - MAX GIBBINS



JOE LINDER
Outside



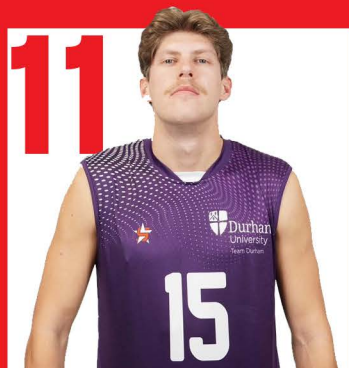
DONOVAN TODOROV
Middle



GRANT MALESKI
Opposite



JOE KOBYLARZ
Setter



Brad Peters
Outside



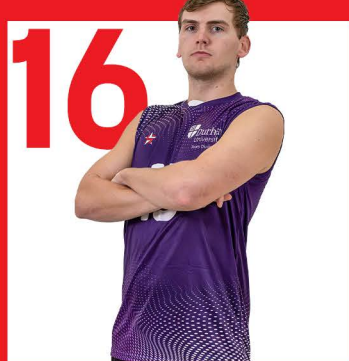
JAKUB GRACZYK
Outside



RYAN DICKSON
Outside



ACE BACKER
Middle



CONOR DUNN
Setter



NICOLA IANNELLI
Libero



A rematch of the Men's National Cup Final will see last year's Super League Champions Durham - and now National Cup winners after prevailing 3-1 last weekend - battle against Malory Eagles for a place in the Final 4 Grand Final.

Durham come into the weekend with a 14-4 record after finishing second in the league, four points ahead of the Londoners and have hit a rich vein of form at the right time, winning their last 10 league matches.

Honours are even in the two league meetings between the Palatinates and the Eagles this season, with both matches going to five sets. Durham won 3-2 on home ground but lost out 15-13 in the fifth when travelling to the capital.

Durham's side features players from a range of different backgrounds and nationalities, and the challenges of integrating people from different programmes possibly showed during early season.

The team has also coped admirably without having a head coach all season, and their pedigree has enabled them to stay motivated and be accountable for their own performances.

Having lost out to Newcastle Staffs at Opening Weekend, their second loss of the season came to table toppers Polonia in London, leaving them with a 3-2 record at that point.

Since then, however, the Palatinates have proven to be tough to beat, particularly at home where they have lost just once, against Richmond Docklands.

Another thing that will boost their confidence is their 3-0 success over Polonia in March, reversing their defeat earlier in the season, which could give them a psychological edge should the two face each other again in the final.

One to watch

6ft 5in middle **Donovan Todorov** - a former student at the University of California Santa Barbara - has excelled all season, not only being the Palatinates leading blocker, but also in offence, boasting a highly efficient kill rate.

Most improved

Brad Peters came into the team as a setter but was given the role of outside and has been successful in the change of position, as underlined by a dynamic performance that saw him chosen as MVP in the Men's Cup Final against Malory Eagles last weekend.

MALORY EAGLES

Head Coach - **JEFFERSON WILLIAMS**
Assistant Coach - **IAN LEGRAND**

Assistant Coach - **CAROL GORDON**
Team Manager - **ANDREW OMOSHEBI**
Statistician - **ANTONIO CODRINGTON**



LUKE ATKINSON
Setter



GHENADIE COROI
Outside



LOGAN CLARK
Middle



LEON DAVIDS-CHAMBERS
Opposite



JOSHUA FUNDAFUNDA
Middle



ZANE SMITH WAUL
Middle



NATHAN FULLERTON
Opposite



CAMERON CARRINGTON
Outside



TOBY FRENCH
Outside



CHEIKH BA
Middle



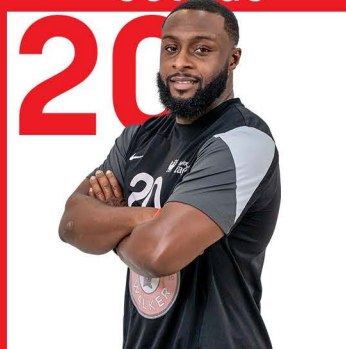
CAMERON HOOK
Outside



ADAM BAIZA
Setter



CHESTER SEARLE
Libero



TOBI SHATIMEHIN
Libero



Malory Eagles narrowly missed out in last year's Super League title race, finishing second behind their Final 4 semi-final opponents, Durham, and also lost 3-1 to the Palatinates last weekend in a pulsating Men's Cup Final.

The most decorated Senior English men's team finished the regular season in third spot with a 13-5 record, having suffered a shock start to their season. Newly-promoted Stockport were 3-0 winners over the Eagles at Opening Weekend, but, crucially, they quickly found a response to win 3-1 against Leeds Gorse in West Yorkshire, kickstarting their season in the process.

In a travel-filled opening stint, Malory suffered a gut-wrenching 3-2 defeat at Durham, where they won an incredible fourth set 36-34, only to lose the tie-break fifth 15-13.

The return match in London saw the roles reversed as, this time, it was the Eagles who won out 15-13 in the decider, illustrating that matches between the two sides are hugely entertaining.

After three matches and a negative record, the Eagles built up some much-needed momentum by winning the return fixture against Stockport 3-1 and then coming out on top in nine of their next 10 matches, including successes over Richmond and Essex Rebels.

With more than half of their roster playing for either the England Senior or U22 Development squads, Malory have a great calibre of home grown talent, a number of whom featured in the historic Novotel Cup win in December.

The Eagles have also seen success in the Errea Team of the Month selections, with Chester Searle and Logan Clark all making the cut during the season. Nathan Fullerton claimed the Player of the month award in January.

One to watch

As part of the U22 England development squad, Cheikh Ba is a player Assistant Coach Carol Gordon has high hopes for in the future and says he is one to keep an eye on.

Most Improved

Setter **Luke Atkinson**, another U22 prospect, is a quick learner who has taken to the Super League like a duck to water and climbed the player leaderboards, despite playing against opponents well above his own age.

SUNDAY MATCHES

Matches will be determined by the results of the Saturday semi-finals.

The schedule of the day can be seen below.



10:30

Women's Bronze medal match

LOSER SEMI-FINAL 1 VS LOSER SEMI-FINAL 3



12:30

Men's Bronze medal match

LOSER SEMI-FINAL 2 VS LOSER SEMI-FINAL 4



14:30

Women's Final

WINNER SEMI-FINAL 1 VS WINNER SEMI-FINAL 3



16:30

Men's Final

WINNER SEMI-FINAL 2 VS WINNER SEMI-FINAL 4

OFFICIALS

SUNDAY MATCHES

FINAL 4



WOMEN'S BRONZE MEDAL

First Referee - JOSEPH GORE

Second Referee - NICK HECKFORD

MEN'S BRONZE MEDAL

First Referee - DOMINIK BIEGAJLO

Second Referee - DOMENICO DE MATTIA

WOMEN'S FINAL

First Referee - KATARINA CEPINOVA

Second Referee - ANNA JUSTKOWSKA

MEN'S FINAL

First Referee - SEBASTIAN WIDLARZ

Second Referee - IGNACIO DIEZ